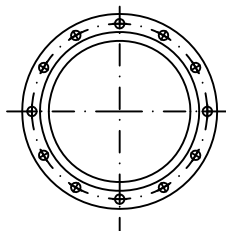
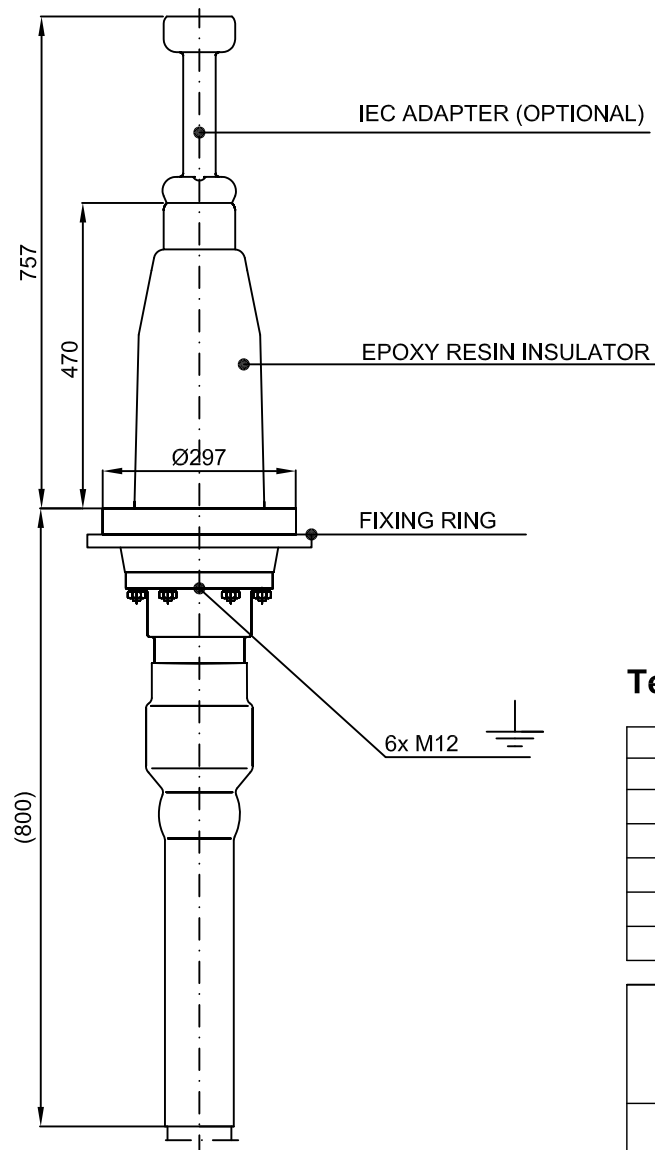


4X M10X25  
BORES ON Ø80  
CONNECTION INTERFACE  
ACC. TO IEC 62271-209



12X Ø14,5  
BORES ON Ø320  
BASE FLANGE ACC.  
TO IEC 62271-209  
(IEC 60859)



## Technical Data

Highest Voltage $U_m$	kV	145
Lightning Impulse Voltage	kV	650
Installation Length (with IEC Adapter)	mm	470 (757)
Weight approx. (with IEC Adapter)	kg	38 (42)
Max. Conductor Size Cu/Al approx.	mm <sup>2</sup>	1200
Outer Diameter Cable Insulation	mm	34-78
Outer Diameter Cable Oversheath	mm	≤120

SWITCHGEAR TERMINATION  
145 kV DRY TYPE  
FOR XLPE - CABLE

PHVS-145

OFFER  
DRAWING



TE Connectivity

TYCO ELECTRONICS RAYCHEM GMBH  
OTTOBRUNN GERMANY

TYCO DRAWING NO.:  
EPD-204-1261-00-A4-0

SHEET  
1 OF 1  
REV  
0